



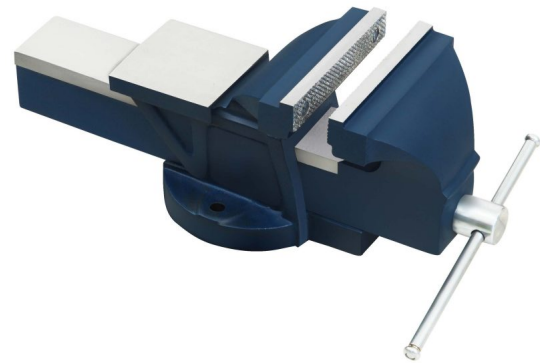
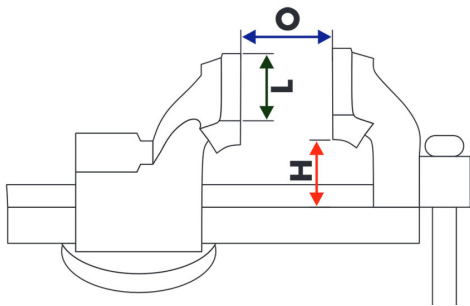
102LA Bench Vice, Large Anvil, Fixed Base (Premium)

Salient Features

- Cast Iron or Spheroidal Graphite (SG) Iron Body
- Chrome Plated Steel Spindle & Handle
- Hardened & Tempered C38 Carbon Steel Jaws

Note: While the inherent toughness, durability and advantages of a Steel Vice over a Gray Cast Iron Vice are well known, Spheroidal / Nodular Graphite (SG) Iron, too, is stronger, more durable and has distinct advantages over Gray Cast Iron in that it has a

- Higher Tensile strength
- High ductility and toughness
- High resistance to wear & tear and corrosion



Specifications

Size (mm)	Size (inches)	Length of Jaw (L) (mm)	Opening of Jaw (O) (mm)	Jaw Dimension (mm)	Height of Jaw (H) (mm)	Packing per Carton (Pcs.)	Weight per Carton (Kgs.)
100	4	100	110	100 x 12 x 20	53	2	15
125	5	125	135	125 x 12 x 20	57	1	10
150	6	150	160	150 x 12 x 20	73	1	14
200	8	200	220	200 x 12 x 23	95	1	26