



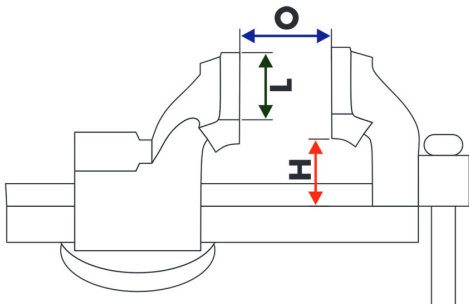
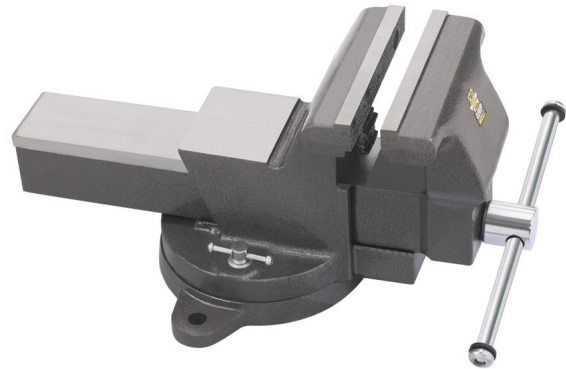
507 Model GF, Spheroidal Graphite (SG) Iron Bench Vice, Swivel Base, with Pipe Jaws

Salient Features

- Spheroidal Graphite (SG) Iron Body
- Chrome Plated Steel Spindle & Handle
- Hardened & Tempered C38 Carbon Steel Jaws
- Robust design and construction
- Conforms to (DIN) PA 80-3.5.2/03.07

Note: While the inherent toughness, durability and advantages of a Steel Vice over a Gray Cast Iron Vice are well known, Spheroidal / Nodular Graphite (SG) Iron, too, is stronger, more durable and has distinct advantages over Gray Cast Iron in that it has a

- Higher Tensile strength
- High ductility and toughness
- High resistance to wear & tear and corrosion



Specifications

Size (mm)	Size (inches)	Length of Jaw (L) (mm)	Opening of Jaw (O) (mm)	Jaw Dimension (mm)	Height of Jaw (H) (mm)	Packing per Carton (Pcs.)	Weight per Carton (Kgs.) (Fixed Base)	Weight per Carton (Kgs.) (Swivel Base)
100	4	100	115	100 x 10 x 18	60	2	17	18
125	5	125	135	125 x 12 x 23	70	1	13	14
150	6	150	165	150 x 12 x 23	80	1	18	20
180	7	180	210	180 x 12 x 23	134	1	24	27